

8th CO-OPERATION FORUM

Safety of Navigation in the Singapore and Malacca Straits

John Murray

Marine Director,
International Chamber of Shipping (ICS)

www.ics-shipping.org



WHAT IS ICS?

- **International trade association for shipowners**
- **Represents all sectors and trades, 85% world fleet**
- **Members - national shipowners' associations from 36 countries**
- **Represents shipowners at IMO and other bodies that impact on shipping**
- **Best practice guidelines**



SAFETY OF NAVIGATION IN THE SINGAPORE AND MALACCA STRAITS

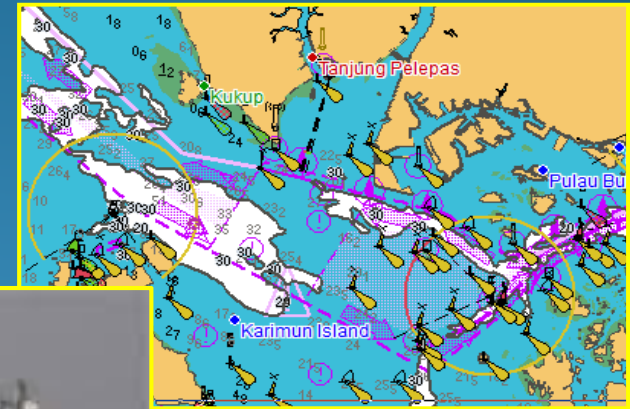
Official Nautical Charts

- Hydrographic survey of the whole TSS
- Availability of ENC's

Security

Places of Refuge

- Guidelines
- Maritime Assistance Service



OFFICIAL NAUTICAL CHARTS – ENCS

- **SOLAS**

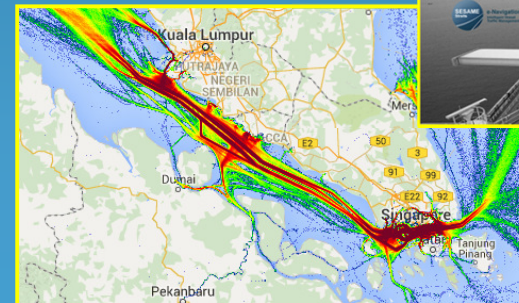
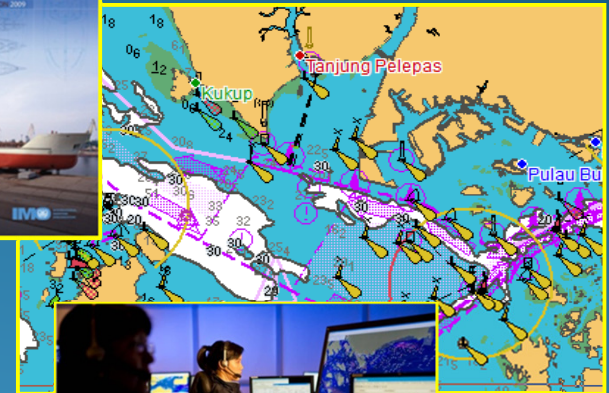
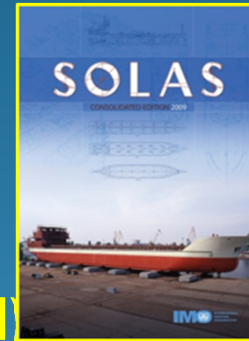
- Hydrographic Services
- Carriage Requirement
- Passage Planning and Monitoring

- **Marine Electronic Highway (MEH)**

- Improvements to ENC's identified
- Pilot survey carriage out

- **Risks and Benefits**

- Safety of Navigation
- Proposed amendments to the TSS
- VTIS
- SESAME
- Port Call Optimisation



IMPROVING ENCS – A WAY AHEAD?

- **Future Opportunities**
 - Extended hydrographic surveys
 - Availability of ENCs
 - NOAA model for chart provision?
 - Pay as you sail / Dynamic licensing
- **Planning for future hydrographic surveys**



SECURITY IN THE SOMS

- **Concern**

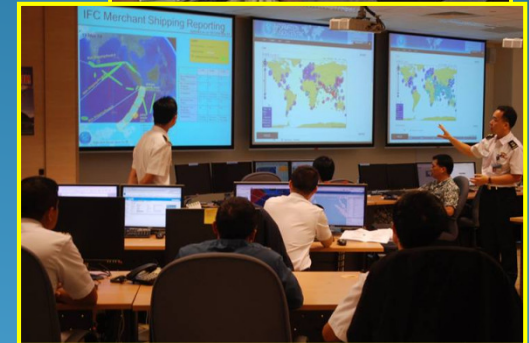
- Piracy
- Armed robbery



- **Common Self Protective Measures**

- **Equivalent reporting and response architecture**

- Trusted focal point;
- Existing infrastructure and agreements;
- Coordinated response



PLACES OF REFUGE

- **Potential for incidents**
- **IMO Guidelines**
 - Places of Refuge
 - Maritime Assistance Services (MAS)
 - EU VTM Directive
- **Prevention**
 - Damage to the ship
 - Pollution of the environment
- **Risks for Coastal States**
 - Pollution of the environment
 - Applicable International Conventions



